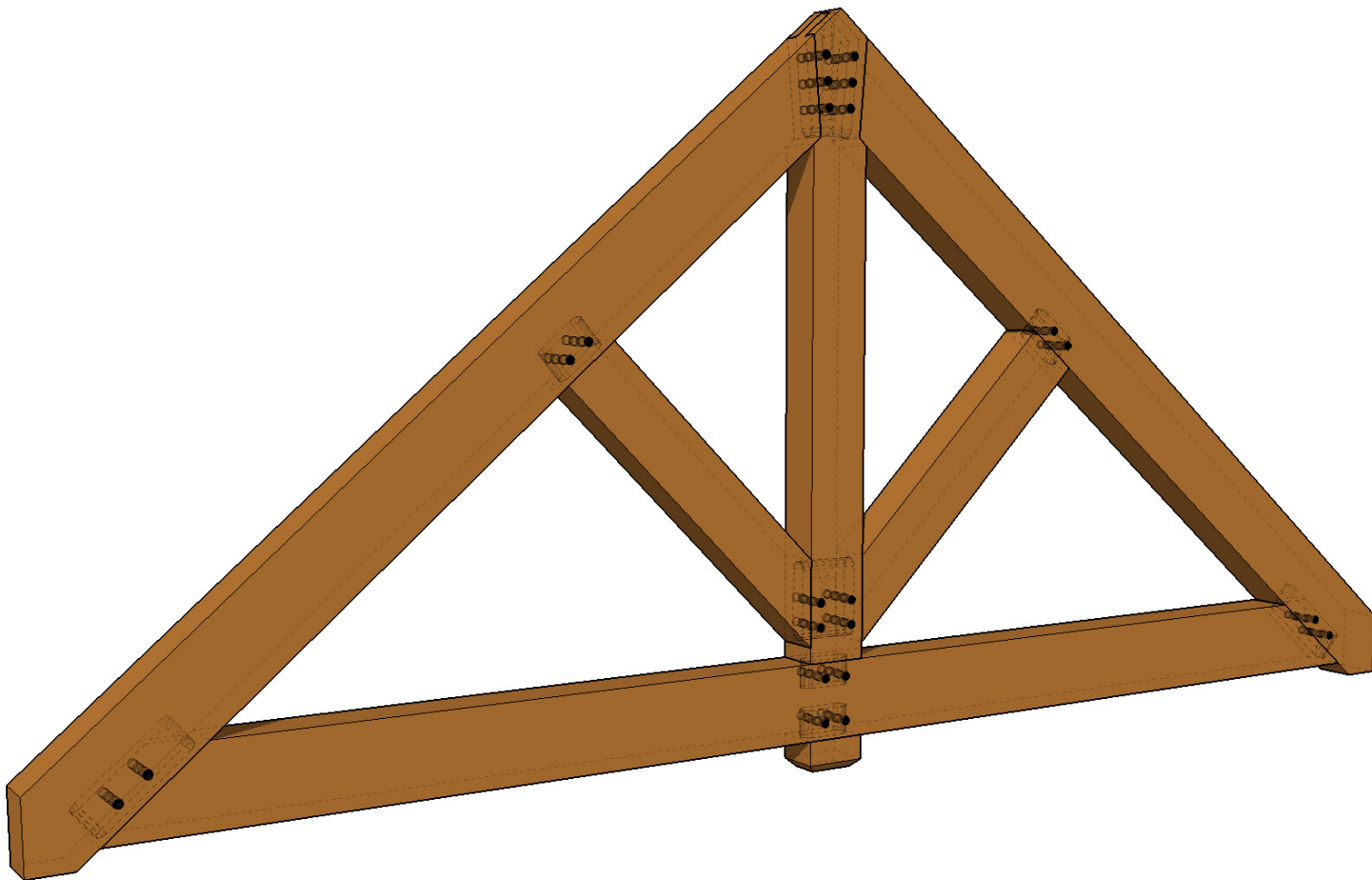


# TRUSS: KING POST

PRODUCT # 90700100

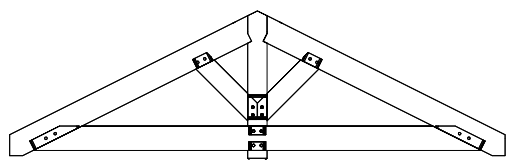
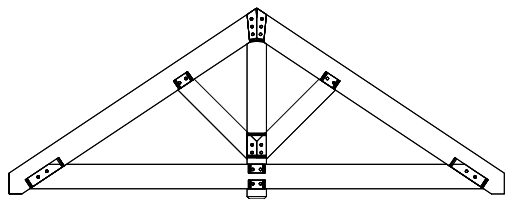
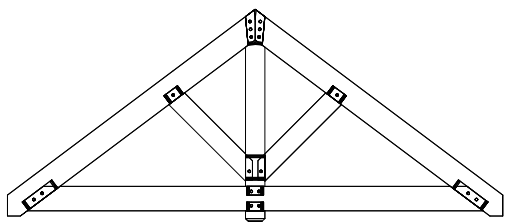
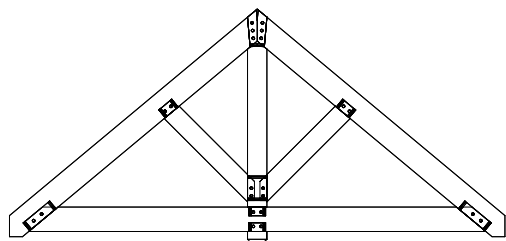
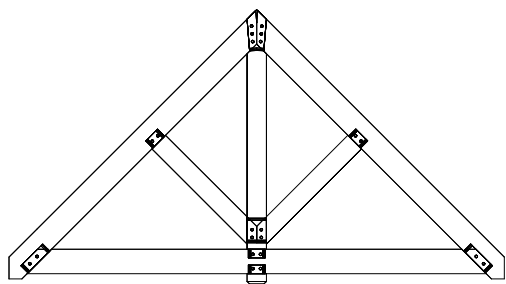


## HEAVY TIMBER MORTISE & TENON TRUSS

- Constructed with Douglas Fir timber
- Precision fabricated on cutting-edge CNC machinery
- Traditional mortise, tenon & wood peg joinery (minimal steel brackets or through-bolting)
- Ultra sturdy construction designed and built to last
- Wide range of sizes & timber species
- Custom stain, texture and finishing available
- Delivered assembled or unassembled
- Requires installation/assembly by authorized reseller or experienced carpenter



The King Post Truss is a classic heavy timber truss that can be used for exterior, interior, structural or decorative purposes. Wood-on-wood mortise and tenon joinery provides a timeless aesthetic. Truss packages can be delivered either unassembled in kit form, or fully assembled (assembly charges apply).



## SPECIFICATIONS:

**VARIATIONS:** 150

**TIMBER SIZES:** 3 [4x, 6x, 8x]

**SPANS:** 10 [8', 10', 12', 14', 16', 18', 20', 22', 24', 26']

**PITCHES:** 5 [6/12, 8/12, 9/12, 10/12, 12/12]

**JOINERY:** Traditional mortise & tenon

## OPTIONS:

**WOOD SPECIES:** Douglas Fir (standard), Western Red Cedar, Alaskan Yellow Cedar, Port Orford Cedar, Cypress, Hemlock, White Fir, Reclaimed, Exotic

**SURFACES:** S4S (standard), resawn, wire brushed, radius-hewn, Adze-hewn, triple-texture

**FINISHES:** Staining or oiling available upon request

**ANCHORING:** Contact reseller

**INSTALLATION:** Products require installation by an experienced carpenter or an authorized SystemBuilt Timber reseller. Assembly, installation and pre-assembly is not included in product pricing – contact reseller for information.

**ENGINEERING:** SystemBuilt Timber products are not engineered to local building codes, unless specifically stated. Engineering approvals can be provided upon request at an additional charge.

**PRE-ASSEMBLY:** Contact reseller

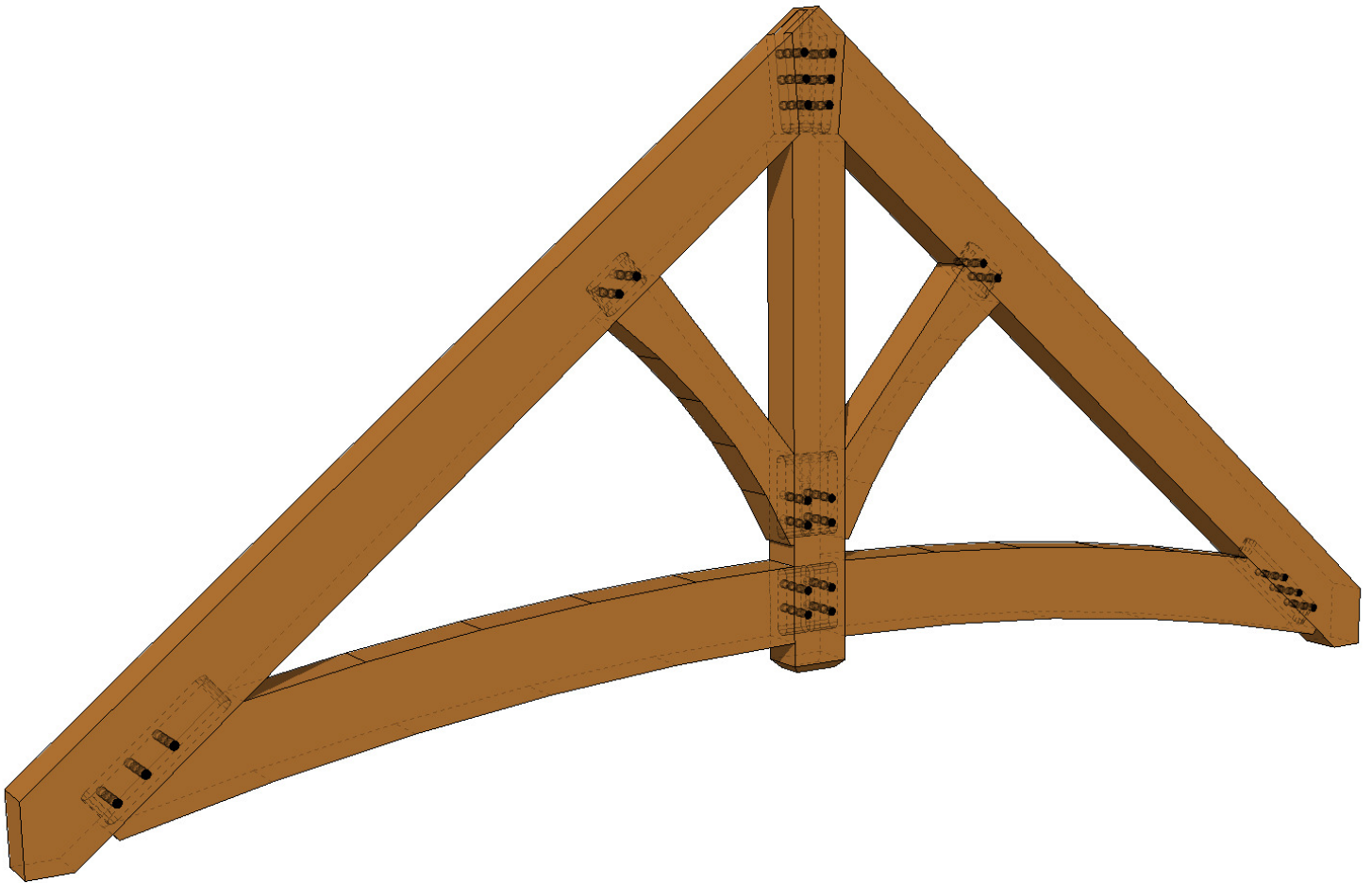
## PRICING:

Pricing, upgrade options and installation services are available upon request



# TRUSS: ARCHED KING POST

PRODUCT # 90700200

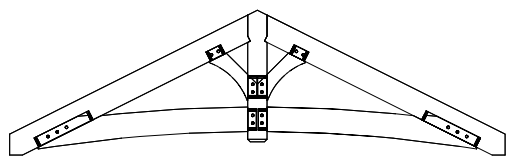
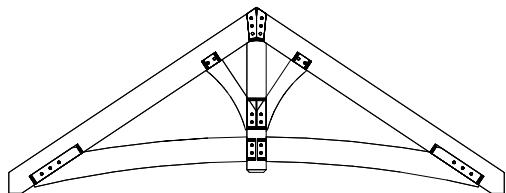
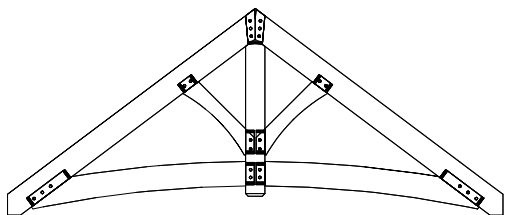
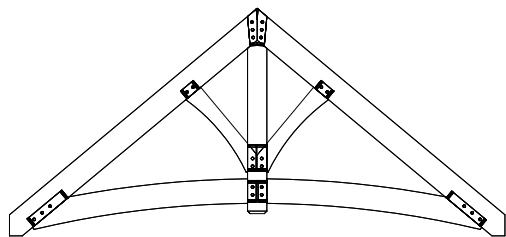
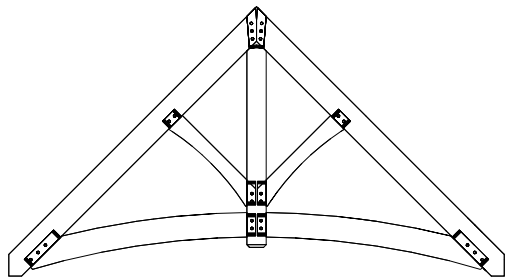


## HEAVY TIMBER MORTISE & TENON TRUSS

- Constructed with Douglas Fir timber
- Precision fabricated on cutting-edge CNC machinery
- Traditional mortise, tenon & wood peg joinery (minimal steel brackets or through-bolting)
- Ultra sturdy construction designed and built to last
- Wide range of sizes & timber species
- Custom stain, texture and finishing available
- Delivered assembled or unassembled
- Requires installation/assembly by authorized reseller or experienced carpenter



The Arched King Post Truss is an elegant heavy timber truss with an arched collar tie that can be used for exterior, interior, structural or decorative purposes. Wood-on-wood mortise and tenon joinery provides a timeless aesthetic. Truss packages can be delivered either unassembled in kit form, or fully assembled (assembly charges apply).



## SPECIFICATIONS:

**VARIATIONS:** 150

**TIMBER SIZES:** 3 [4x, 6x, 8x]

**SPANS:** 10 [8', 10', 12', 14', 16', 18', 20', 22', 24', 26']

**PITCHES:** 5 [6/12, 8/12, 9/12, 10/12, 12/12]

**JOINERY:** Traditional mortise & tenon

## OPTIONS:

**WOOD SPECIES:** Douglas Fir (standard), Western Red Cedar, Alaskan Yellow Cedar, Port Orford Cedar, Cypress, Hemlock, White Fir, Reclaimed, Exotic

**SURFACES:** S4S (standard), resawn, wire brushed, radius-hewn, Adze-hewn, triple-texture

**FINISHES:** Staining or oiling available upon request

**ANCHORING:** Contact reseller

**INSTALLATION:** Products require installation by an experienced carpenter or an authorized SystemBuilt Timber reseller. Assembly, installation and pre-assembly is not included in product pricing – contact reseller for information.

**ENGINEERING:** SystemBuilt Timber products are not engineered to local building codes, unless specifically stated. Engineering approvals can be provided upon request at an additional charge.

**PRE-ASSEMBLY:** Contact reseller

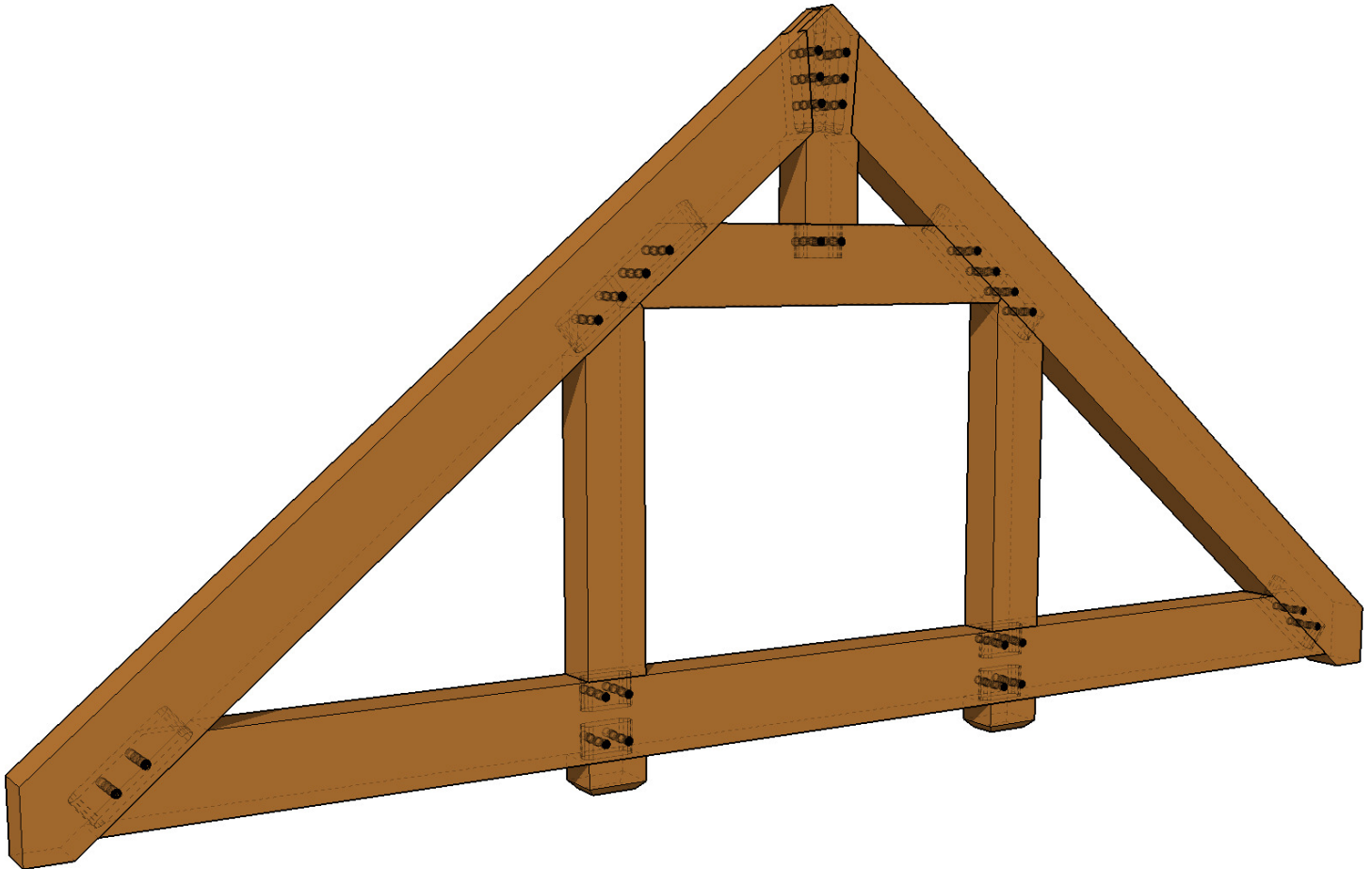
## PRICING:

Pricing, upgrade options and installation services are available upon request



# TRUSS: QUEEN POST

PRODUCT # 90700300

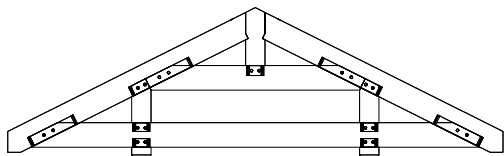
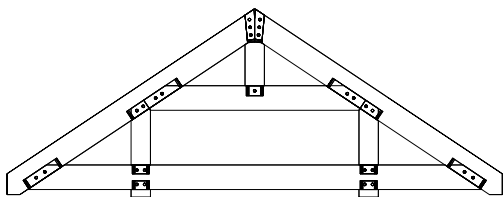
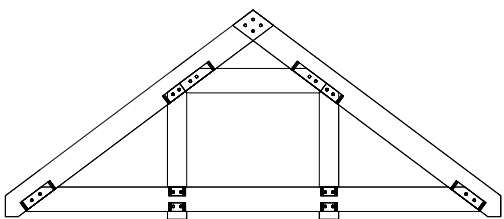
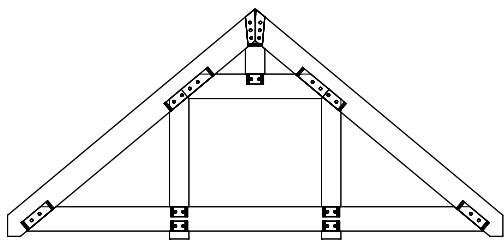
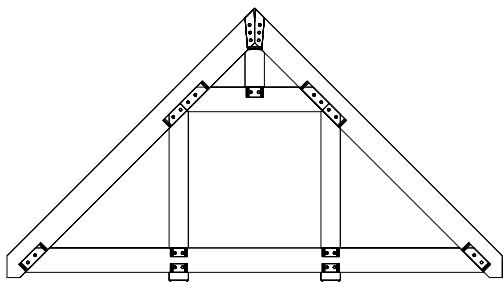


## HEAVY TIMBER MORTISE & TENON TRUSS

- Constructed with Douglas Fir timber
- Precision fabricated on cutting-edge CNC machinery
- Traditional mortise, tenon & wood peg joinery (minimal steel brackets or through-bolting)
- Ultra sturdy construction designed and built to last
- Wide range of sizes & timber species
- Custom stain, texture and finishing available
- Delivered assembled or unassembled
- Requires installation/assembly by authorized reseller or experienced carpenter



The Queen Post Truss is a classic heavy timber truss that can be used for exterior, interior, structural or decorative purposes. Wood-on-wood mortise and tenon joinery provides a timeless aesthetic. Truss packages can be delivered either unassembled in kit form, or fully assembled (assembly charges apply).



## SPECIFICATIONS:

**VARIATIONS:** 150

**TIMBER SIZES:** 3 [4x, 6x, 8x]

**SPANS:** 10 [8', 10', 12', 14', 16', 18', 20', 22', 24', 26']

**PITCHES:** 5 [6/12, 8/12, 9/12, 10/12, 12/12]

**JOINERY:** Traditional mortise & tenon

## OPTIONS:

**WOOD SPECIES:** Douglas Fir (standard), Western Red Cedar, Alaskan Yellow Cedar, Port Orford Cedar, Cypress, Hemlock, White Fir, Reclaimed, Exotic

**SURFACES:** S4S (standard), resawn, wire brushed, radius-hewn, Adze-hewn, triple-texture

**FINISHES:** Staining or oiling available upon request

**ANCHORING:** Contact reseller

**INSTALLATION:** Products require installation by an experienced carpenter or an authorized SystemBuilt Timber reseller. Assembly, installation and pre-assembly is not included in product pricing – contact reseller for information.

**ENGINEERING:** SystemBuilt Timber products are not engineered to local building codes, unless specifically stated. Engineering approvals can be provided upon request at an additional charge.

**PRE-ASSEMBLY:** Contact reseller

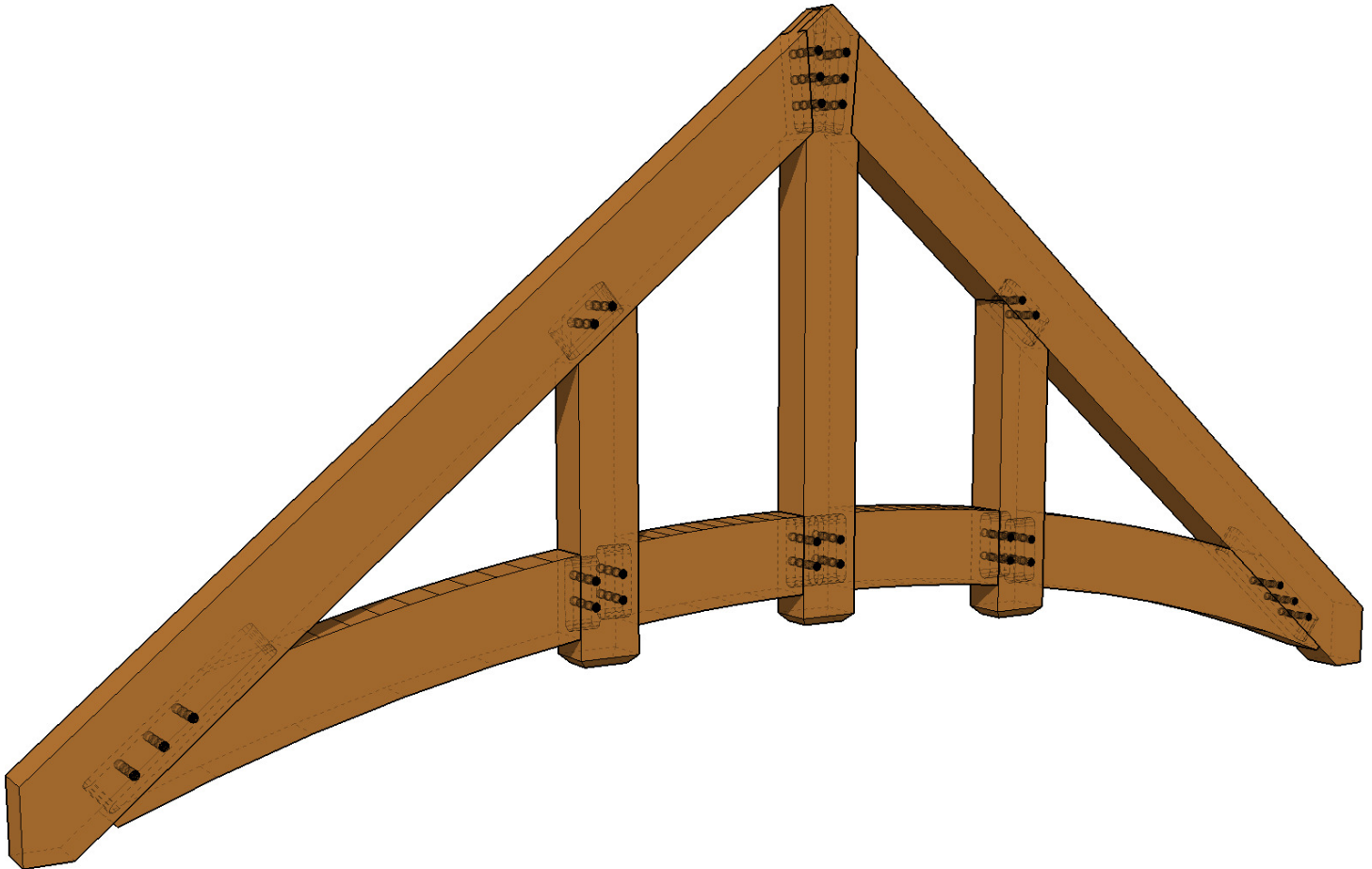
## PRICING:

Pricing, upgrade options and installation services are available upon request



# TRUSS: ARCHED QUEEN POST

PRODUCT # 90700700

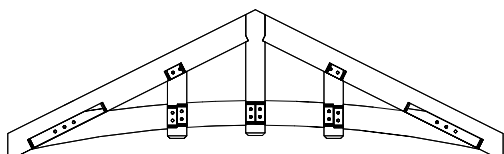
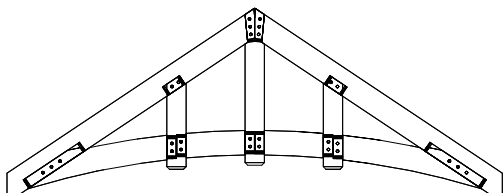
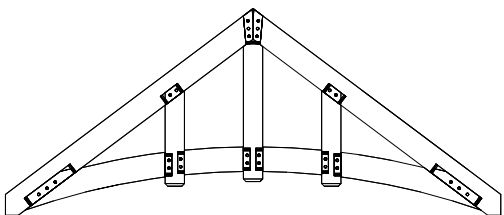
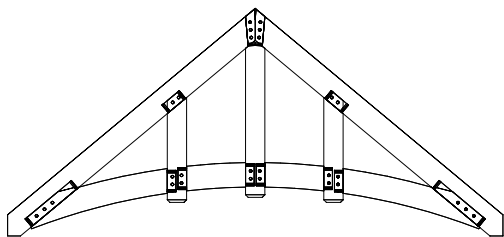
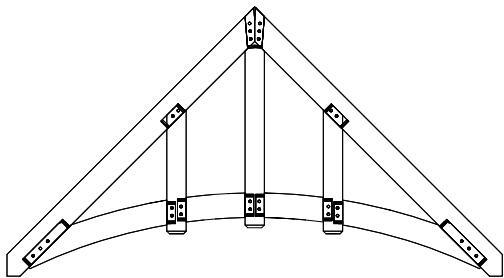


## HEAVY TIMBER MORTISE & TENON TRUSS

- Constructed with Douglas Fir timber
- Precision fabricated on cutting-edge CNC machinery
- Traditional mortise, tenon & wood peg joinery (minimal steel brackets or through-bolting)
- Ultra sturdy construction designed and built to last
- Wide range of sizes & timber species
- Custom stain, texture and finishing available
- Delivered assembled or unassembled
- Requires installation/assembly by authorized reseller or experienced carpenter



The Arched Queen Post Truss is an elegant heavy timber truss with an arched collar tie that can be used for exterior, interior, structural or decorative purposes. Wood-on-wood mortise and tenon joinery provides a timeless aesthetic. Truss packages can be delivered either unassembled in kit form, or fully assembled (assembly charges apply).



## SPECIFICATIONS:

**VARIATIONS:** 150

**TIMBER SIZES:** 3 [4x, 6x, 8x]

**SPANS:** 10 [8', 10', 12', 14', 16', 18', 20', 22', 24', 26']

**PITCHES:** 5 [6/12, 8/12, 9/12, 10/12, 12/12]

**JOINERY:** Traditional mortise & tenon

## OPTIONS:

**WOOD SPECIES:** Douglas Fir (standard), Western Red Cedar, Alaskan Yellow Cedar, Port Orford Cedar, Cypress, Hemlock, White Fir, Reclaimed, Exotic

**SURFACES:** S4S (standard), resawn, wire brushed, radius-hewn, Adze-hewn, triple-texture

**FINISHES:** Staining or oiling available upon request

**ANCHORING:** Contact reseller

**INSTALLATION:** Products require installation by an experienced carpenter or an authorized SystemBuilt Timber reseller. Assembly, installation and pre-assembly is not included in product pricing – contact reseller for information.

**ENGINEERING:** SystemBuilt Timber products are not engineered to local building codes, unless specifically stated. Engineering approvals can be provided upon request at an additional charge.

**PRE-ASSEMBLY:** Contact reseller

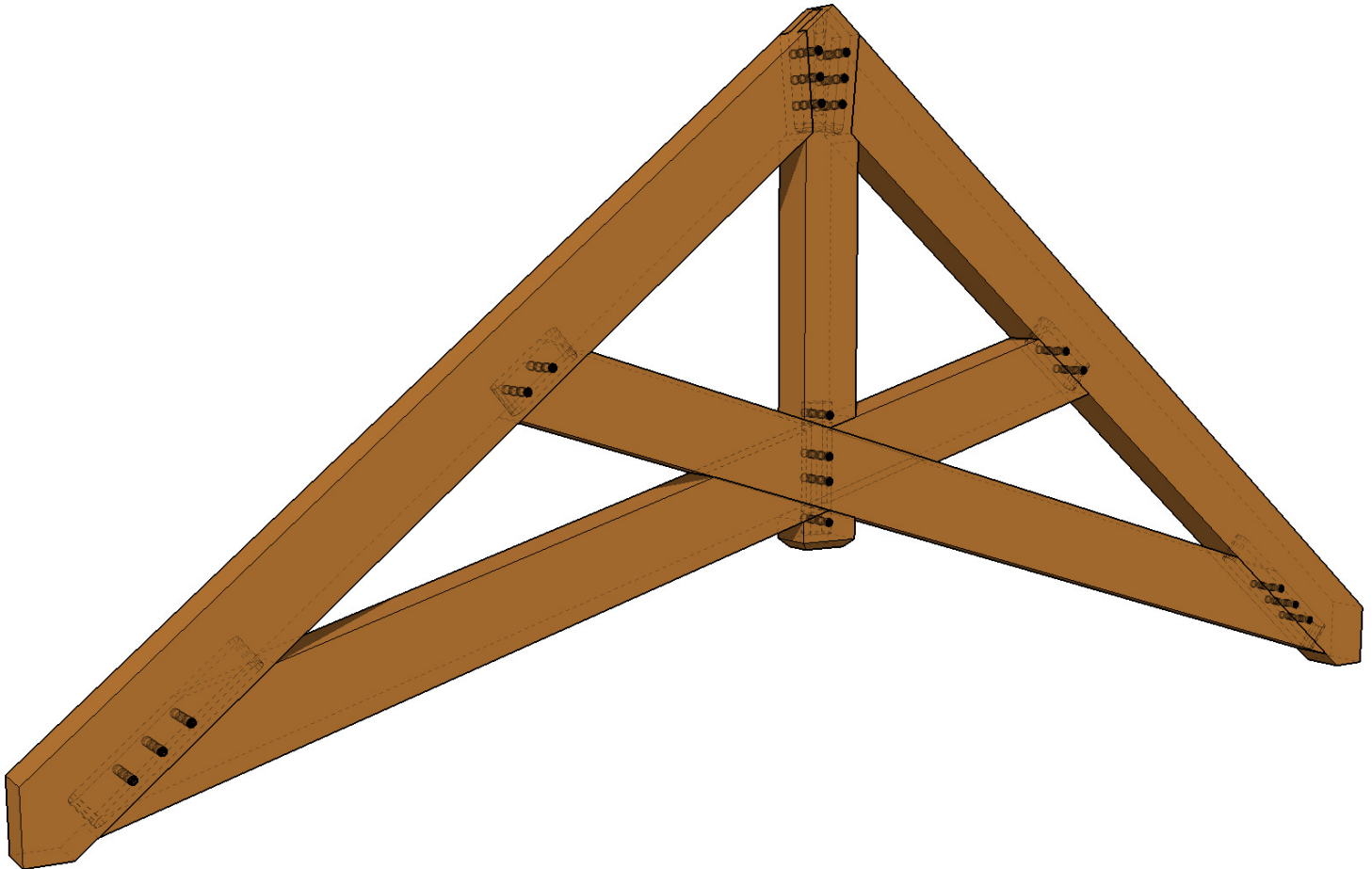
## PRICING:

Pricing, upgrade options and installation services are available upon request



# TRUSS: SCISSOR

PRODUCT # 90700500

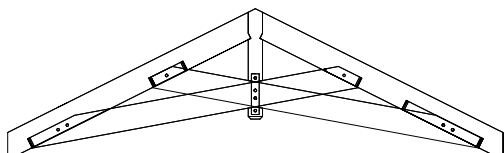
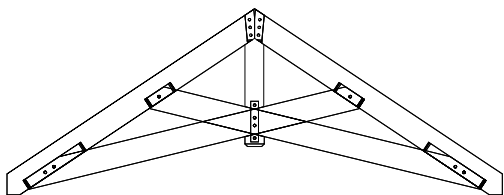
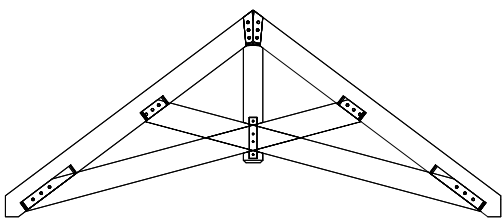
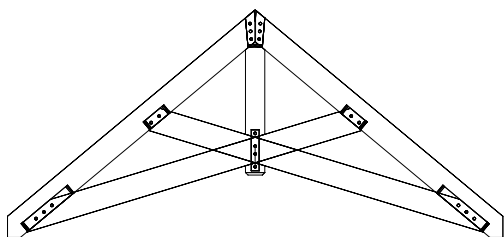
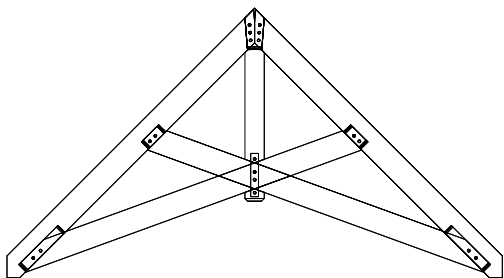


## HEAVY TIMBER MORTISE & TENON TRUSS

- Constructed with Douglas Fir timber
- Precision fabricated on cutting-edge CNC machinery
- Traditional mortise, tenon & wood peg joinery (minimal steel brackets or through-bolting)
- Ultra sturdy construction designed and built to last
- Wide range of sizes & timber species
- Custom stain, texture and finishing available
- Delivered assembled or unassembled
- Requires installation/assembly by authorized reseller or experienced carpenter



The Scissor Truss is a striking and contemporary take on the more classic truss design. It can be used for exterior, interior, structural or decorative purposes. Wood-on-wood mortise and tenon joinery provides a timeless aesthetic. Truss packages can be delivered either unassembled in kit form, or fully assembled (assembly charges apply).



## SPECIFICATIONS:

**VARIATIONS:** 150

**TIMBER SIZES:** 3 [4x, 6x, 8x]

**SPANS:** 10 [8', 10', 12', 14', 16', 18', 20', 22', 24', 26']

**PITCHES:** 5 [6/12, 8/12, 9/12, 10/12, 12/12]

**JOINERY:** Traditional mortise & tenon

## OPTIONS:

**WOOD SPECIES:** Douglas Fir [standard], Western Red Cedar, Alaskan Yellow Cedar, Port Orford Cedar, Cypress, Hemlock, White Fir, Reclaimed, Exotic

**SURFACES:** S4S [standard], resawn, wire brushed, radius-hewn, Adze-hewn, triple-texture

**FINISHES:** Staining or oiling available upon request

**ANCHORING:** Contact reseller

**INSTALLATION:** Products require installation by an experienced carpenter or an authorized SystemBuilt Timber reseller. Assembly, installation and pre-assembly is not included in product pricing – contact reseller for information.

**ENGINEERING:** SystemBuilt Timber products are not engineered to local building codes, unless specifically stated. Engineering approvals can be provided upon request at an additional charge.

**PRE-ASSEMBLY:** Contact reseller

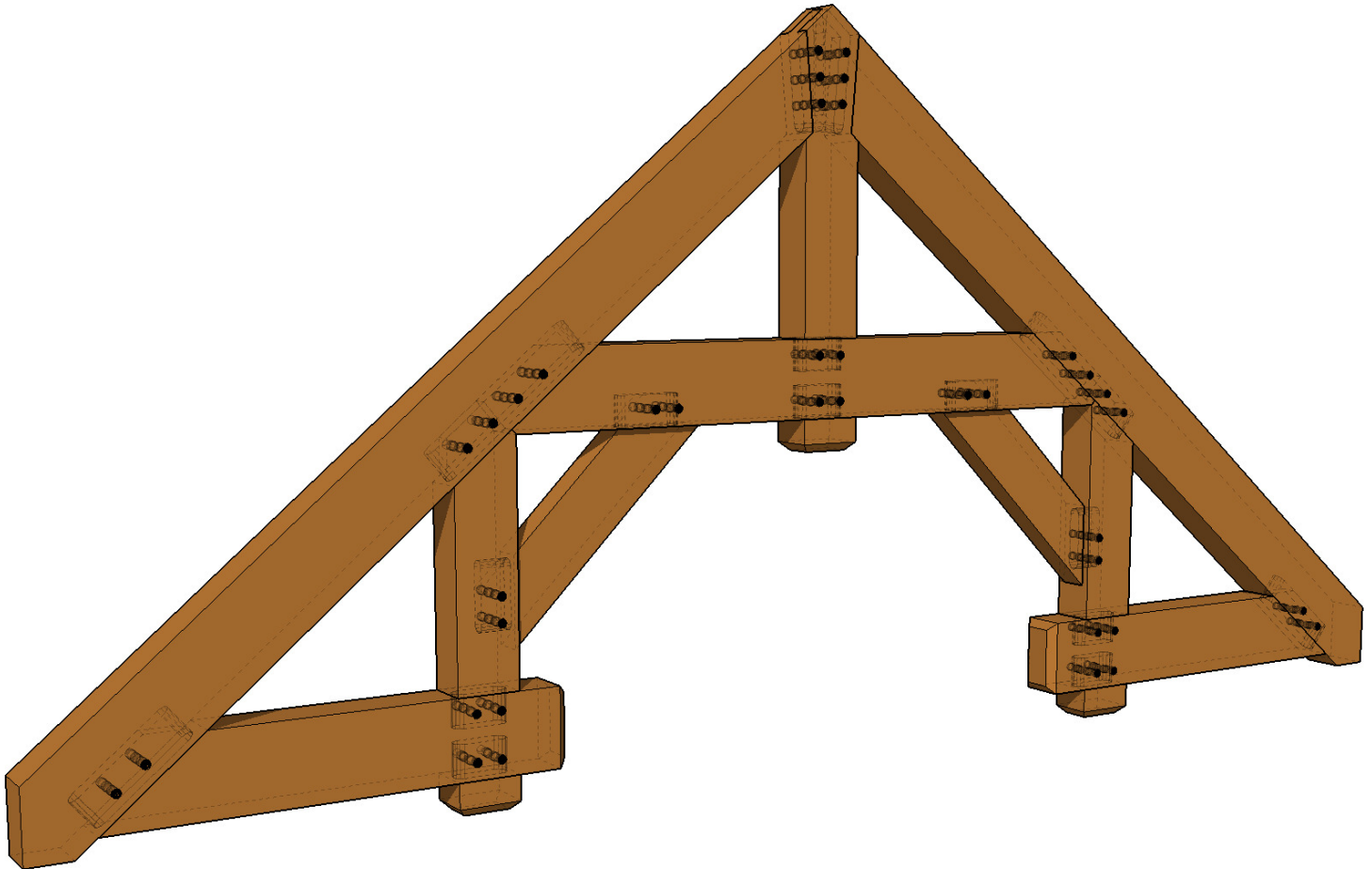
## PRICING:

Pricing, upgrade options and installation services are available upon request



# TRUSS: HAMMER BEAM

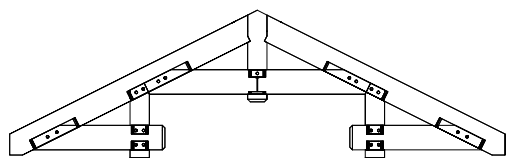
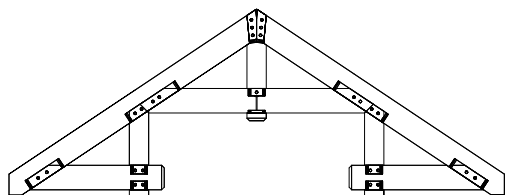
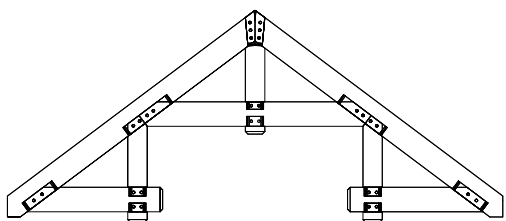
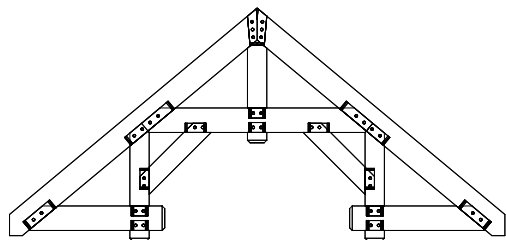
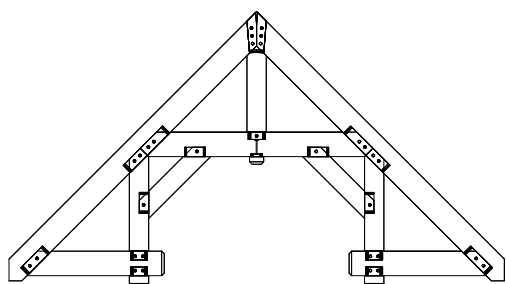
PRODUCT # 90700400



## HEAVY TIMBER MORTISE & TENON TRUSS

- Constructed with Douglas Fir timber
- Precision fabricated on cutting-edge CNC machinery
- Traditional mortise, tenon & wood peg joinery (minimal steel brackets or through-bolting)
- Ultra sturdy construction designed and built to last
- Wide range of sizes & timber species
- Custom stain, texture and finishing available
- Delivered assembled or unassembled
- Requires installation/assembly by authorized reseller or experienced carpenter





The Hammer Beam Truss is a sophisticated heavy timber truss design with straight hammer beams that allows additional head height in more confined spaces. It can be used for exterior, interior, structural or decorative purposes. Wood-on-wood mortise and tenon joinery provides a timeless aesthetic. Truss packages can be delivered either unassembled in kit form, or fully assembled (assembly charges apply).

## SPECIFICATIONS:

**VARIATIONS:** 150

**TIMBER SIZES:** 3 (4x, 6x, 8x)

**SPANS:** 10 (8', 10', 12', 14', 16', 18', 20', 22', 24', 26')

**PITCHES:** 5 (6/12, 8/12, 9/12, 10/12, 12/12)

**JOINERY:** Traditional mortise & tenon

## OPTIONS:

**WOOD SPECIES:** Douglas Fir (standard), Western Red Cedar, Alaskan Yellow Cedar, Port Orford Cedar, Cypress, Hemlock, White Fir, Reclaimed, Exotic

**SURFACES:** S4S (standard), resawn, wire brushed, radius-hewn, Adze-hewn, triple-texture

**FINISHES:** Staining or oiling available upon request

**ANCHORING:** Contact reseller

**INSTALLATION:** Products require installation by an experienced carpenter or an authorized SystemBuilt Timber reseller. Assembly, installation and pre-assembly is not included in product pricing – contact reseller for information.

**ENGINEERING:** SystemBuilt Timber products are not engineered to local building codes, unless specifically stated. Engineering approvals can be provided upon request at an additional charge.

**PRE-ASSEMBLY:** Contact reseller

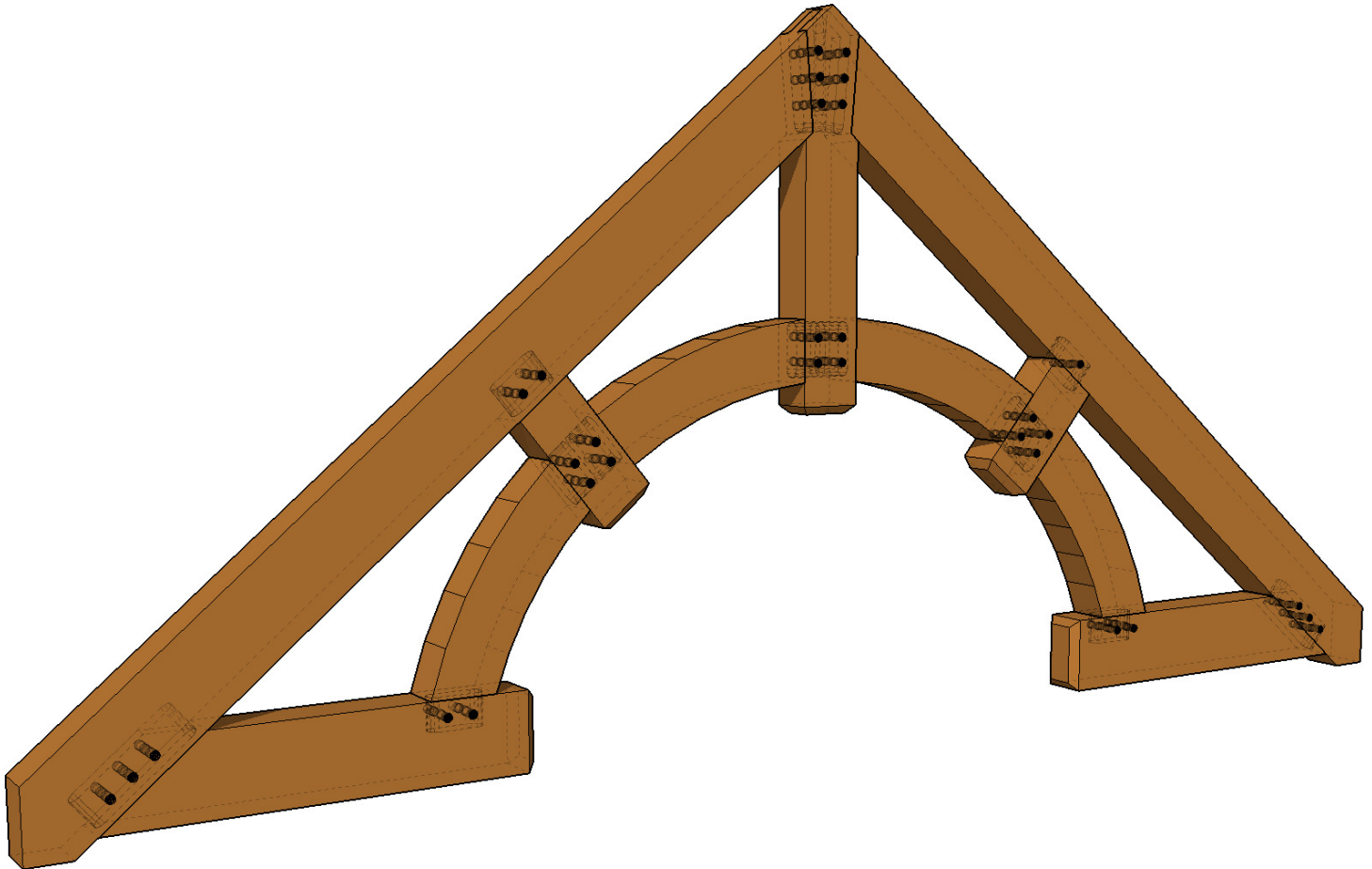
## PRICING:

Pricing, upgrade options and installation services are available upon request



# TRUSS: RADIAL HAMMER

PRODUCT # 90700600

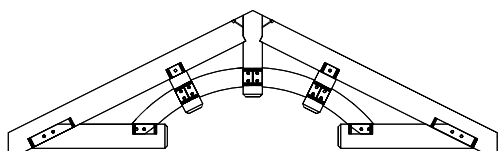
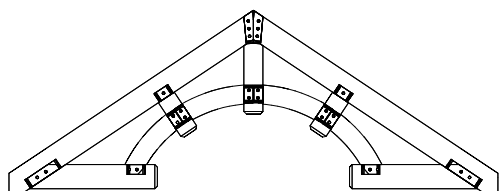
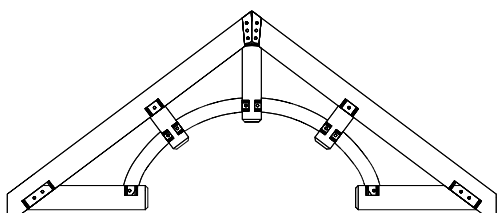
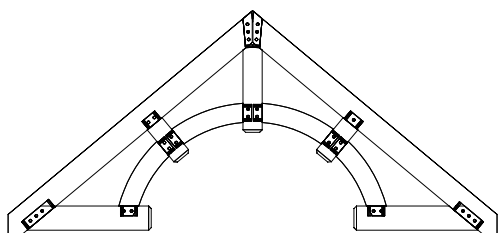
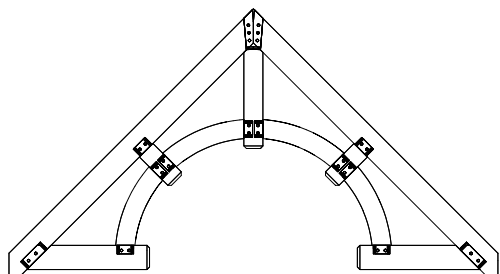


## HEAVY TIMBER MORTISE & TENON TRUSS

- Constructed with Douglas Fir timber
- Precision fabricated on cutting-edge CNC machinery
- Traditional mortise, tenon & wood peg joinery (minimal steel brackets or through-bolting)
- Ultra sturdy construction designed and built to last
- Wide range of sizes & timber species
- Custom stain, texture and finishing available
- Delivered assembled or unassembled
- Requires installation/assembly by authorized reseller or experienced carpenter



The Radial Hammer Truss is a sophisticated heavy timber truss design with arched collar tie and hammer beams that allows additional head height in more confined spaces. It can be used for exterior, interior, structural or decorative purposes. Wood-on-wood mortise and tenon joinery provides a timeless aesthetic. Truss packages can be delivered either unassembled in kit form, or fully assembled (assembly charges apply).



## SPECIFICATIONS:

**VARIATIONS:** 150

**TIMBER SIZES:** 3 [4x, 6x, 8x]

**SPANS:** 10 [8', 10', 12', 14', 16', 18', 20', 22', 24', 26']

**PITCHES:** 5 [6/12, 8/12, 9/12, 10/12, 12/12]

**JOINERY:** Traditional mortise & tenon

## OPTIONS:

**WOOD SPECIES:** Douglas Fir (standard), Western Red Cedar, Alaskan Yellow Cedar, Port Orford Cedar, Cypress, Hemlock, White Fir, Reclaimed, Exotic

**SURFACES:** S4S (standard), resawn, wire brushed, radius-hewn, Adze-hewn, triple-texture

**FINISHES:** Staining or oiling available upon request

**ANCHORING:** Contact reseller

**INSTALLATION:** Products require installation by an experienced carpenter or an authorized SystemBuilt Timber reseller. Assembly, installation and pre-assembly is not included in product pricing – contact reseller for information.

**ENGINEERING:** SystemBuilt Timber products are not engineered to local building codes, unless specifically stated. Engineering approvals can be provided upon request at an additional charge.

**PRE-ASSEMBLY:** Contact reseller

## PRICING:

Pricing, upgrade options and installation services are available upon request